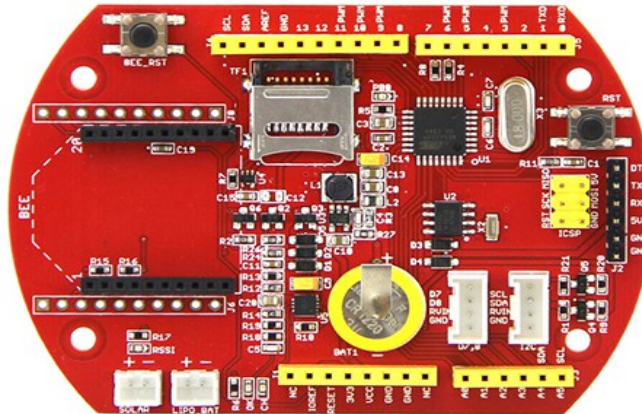


RB-See-362

Seeeduino Stalker v3 Arduino Compatible Microcontroller



Seeeduino Stalker v3 is an Arduino compatible main board which has various functions. It's an X-Bee carrier board while using with X-Bee modules, such as GPS Bee, Bluetooth Bee and Wifi Bee, etc. It's a charger for Lipo while plugging a solar panel onto the board. Also, you can get time from the inside RTC chip, and all data can be easily stored through the SD card. In a word, Seeeduino Stalker v3 has an independent ecological system and it's good for applications in outdoor environment.

Feature:

- Arduino compatible, based on Seeeduino
- Onboard microcontroller: ATmega328P
- Onboard Real Time Clock chip with a supercap as a backup power source
- Serial interface with DTR for auto reset during programming when operating in standalone mode. (For programming, UartSBee must be bought separately)
- MicroSD card socket
- I2C Pin header (operation voltage is selectable: 5.0V or 3.3V)
- User defined LED
- Bee series socket – 2 x 10 pin 2.0mm pitch (which will mate with - one at a time - any of the wireless modules: XBee, BluetoothBee, GPSBee or RFBee)
- Please note that The IO Ports work in 0~3.3v level only

Specification:

- Micro Controller: ATmega328
- Crystal Oscillator: 8 MHz
- RTC: DS1337S
- Board for Arduino IDE: Arduino Pro or Pro Mini (3.3v , 8 MHz)/w/ATmega328
- Input voltage of Solar Panel: 4.6v - 6v
- Open Circuit Current: 6 mA max
- Charging Current: 300mA
- Maximum Current on 3.3v port: 800mA
- Size of PCB: 86.74mm x 60.96mm