

## G79L12

### 3-TERMINAL NEGATIVE VOLTAGE REGULATOR

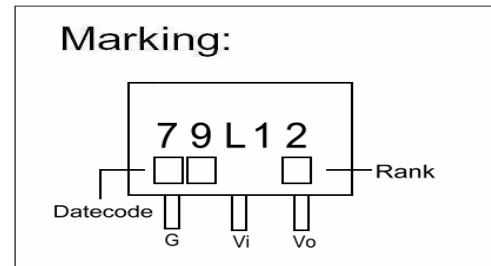
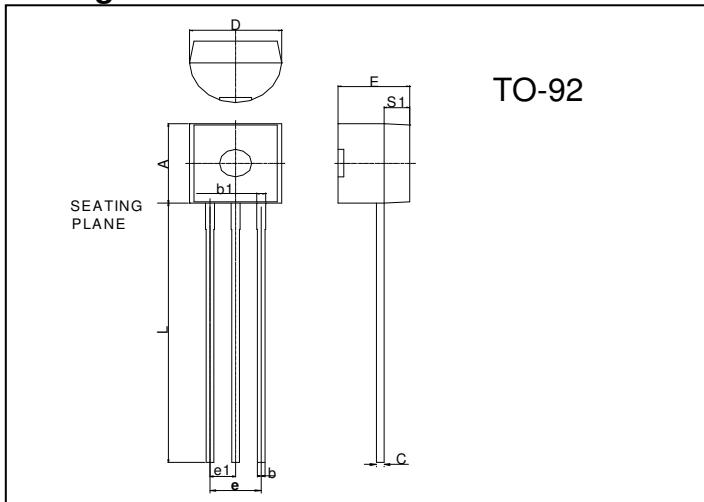
#### Description

The GTM G79L12 is monolithic fixed voltage regulator integrated circuit. They are suitable for applications that required supply current up to 100mA.

#### Features

- \*Output current up to 100mA
- \*Thermal overload shutdown protection
- \*Short circuit current limiting

#### Package Dimensions



REF.	Millimeter		REF.	Millimeter	
	Min.	Max.		Min.	Max.
A	4.45	4.7	D	4.44	4.7
S1	1.02	-	E	3.30	3.81
b	0.36	0.51	L	12.70	-
b1	0.36	0.76	e1	1.150	1.390
C	0.36	0.51	e	2.42	2.66

#### Absolute Maximum Ratings

Parameter	Ratings	Unit
Input Voltage	-35	V
Output Current	100	mA
Storage Temperature Range	-55 ~ +150	°C
Operating Junction Temperature Range	-20 ~ +150	°C
Power Dissipation	625	mW

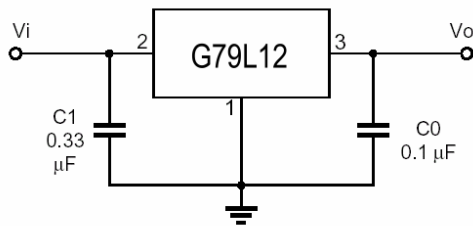
#### Characteristics at Ta = 25°C (Vi=-19V, Io=40mA, Tj=25°C, C1=0.33uF, Co=0.1uF unless otherwise specified)

Symbol	Rank A ( 3% )			Unit	Test Conditions
	Min.	Typ.	Max.		
VO	-11.64	-12	-12.36	V	Vin = -19V, Io=40mA
VO-VIN (Line Regulation)	-	36	250	mV	Vin= -14.5 ~ -27V, Io=40mA
ΔVO-IO (Load Regulation)	-	16	100	mV	Vin= -19V, Io=1~ 100mA
IQ Quiescent current	-	3.5	6	mA	Vin= -19V, Io=40mA
Vno Output Noise voltage	-	210	-	uV	Vin= -19V, BW=10Hz ~100KHz, Io=40mA
RR Ripple Rejection	37	64	-	dB	Vin= -15~-25V, Io=40mA, Ein=1Vp-p, f=120Hz

**Characteristics at Ta = 25°C** ( $V_i = -19V, I_o = 40mA, T_j = 25°C, C_1 = 0.33\mu F, C_o = 0.1\mu F$  unless otherwise specified)

Rank B ( 5% )				Unit	Test Conditions
Symbol	Min.	Typ.	Max.		
VO	-11.4	-12	-12.6	V	$V_{in} = -19V, I_o = 40mA$
VO-VIN (Line Regulation)	-	36	250	mV	$V_{in} = -14.5 \sim -27V, I_o = 40mA$
$\Delta VO-I_O$ (Load Regulation)	-	16	100	mV	$V_{in} = -19V, I_o = 1 \sim 100mA$
IQ Quiescent current	-	3.5	6	mA	$V_{in} = -19V, I_o = 40mA$
Vno Output Noise Voltage	-	210	-	$\mu V$	$V_{in} = -19V, BW = 10Hz \sim 100KHz, I_o = 40mA$
RR Ripple Rejection	37	64	-	dB	$V_{in} = -15 \sim -25V, I_o = 40mA, E_{in} = 1Vp-p, f = 120Hz$

## Application Circuit



**Important Notice:**

- All rights are reserved. Reproduction in whole or in part is prohibited without the prior written approval of GTM.
- GTM reserves the right to make changes to its products without notice.
- GTM semiconductor products are not warranted to be suitable for use in life-support Applications, or systems.
- GTM assumes no liability for any consequence of customer product design, infringement of patents, or application assistance.

**Head Office And Factory:**

- **Taiwan:** No. 17-1 Tatung Rd. Fu Kou Hsin-Chu Industrial Park, Hsin-Chu, Taiwan, R. O. C.
- TEL : 886-3-597-7061 FAX : 886-3-597-9220, 597-0785
- **China:** (201203) No.255, Jang-Jiang Tsai-Lueng RD. , Pu-Dung-Hsin District, Shang-Hai City, China
- TEL : 86-21-5895-7671 ~ 4 FAX : 86-21-38950165