

## SPECIFICATIONS

CONTACT RATING: 5A @125 VAC or 28 VDC ( Q terminal)  
 ELECTRICAL LIFE: 50,000 make-and-break cycles at full load  
 CONTACT RESISTANCE: 10 mΩ max. initial @2-4 VDC, 100 mA  
 INSULATION RESISTANCE: 1,000 MΩ min.  
 DIELECTRIC STRENGTH: 1,500 V RMS @ sea level.  
 OPERATING TEMPERATURE: -30°C to +85°C

## MATERIALS

CASE - diallyl phthalate ( DAP )  
 Actuator - ABS ,black standard.  
 Frame - Nylon (UL 94V-0) ,black  
 BUSHING - Copper alloy or Zinc , nickel plated  
 HOUSING - Stainless Steel  
 CONTACT AND TERMINAL - Copper alloy, silver plated

## How do you build the switches you need!!

The straight terminal type , please see the (A) ;

The right angle P.C terminals, please see the (B)

(A) R 8 0 1 5 - R 1 1 - 2 - C Q - E - S 2 0 -  

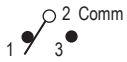
Switches Function			Actuator	Actuator Color	Frame Color	Termination	Vertical support Bracket	
R8015	SP	R8017 DP on-none-on	R11	1 white	1 white	B solder lug	(none)	
R8015A	SP	R8017A DP on-none-(on)	R21	2 black(std)	2 black	C P.C 1.27width	S20 11.68	
R8016	SP	R8018 DP on-off-on	P13	3 red	3 red	D Quick connect	S25 16.00	
R8016A	SP	R8018A DP (on)-off-(on)	P23	4 orange		D1 wire wrap 19.05	S35 11.68	
R8016B	SP	R8018B DP on-off-(on)	R15	5 yellow		D3 wire wrap 10.8	S40 16.00	
R8301V	3P	R8401V 4P on-none-on	R17	6 green			V20 snap-in 11.68	
R8303V	3P	R8403V 4P on-none-(on)	R19	7 blue			V25 snap-in 16.00	
R8305V	3P	R8405V 4P on-off-on	R12	9 gray			V35 snap-in 11.68	
R8307V	3P	R8407V 4P (on)-off-(on)	R22				V40 snap-in 16.00	
R8309V	3P	R8409V 4P on-off-(on)	R32					
<b>3 way position switches</b>			P14	now the available is code "1/2/3/4/7/9" the other please inquire first				
R818		SP3T on-on-on	P24					
R818A		SP3T (on)-on-(on)	P34					
R818B		SP3T on-on-(on)						
R845V		DP3T on-on-on						
R847V		DP3T (on)-on-(on)						
R849V		DP3T on-on-(on)						
							<b>RoHS code</b>	
							H = RoHS Compliant	
							<b>Epoxy seal</b>	
							(none) none seal	
							E epoxy seal	
							<b>Contact Material</b>	
							Q silver plated	
							R gold plated	
							G gold over silver	
							K tin plated	

(B) R 8 0 1 5 P - R 1 1 - 2 - Q - E - S -  

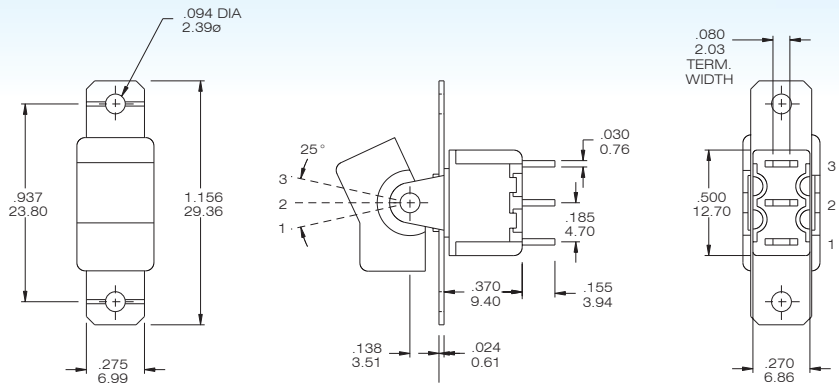
Horizon Right Angle	Vertical Right Angle	Switches Function	Actuator	Actuator Color	Contact Material	RoHS code
R8015P	R8015L / R8013L	SP on-none-on	R11	1 white	Q silver plated	H = RoHS Compliant
R8015PA	R8015LA / R8013LA	SP on-none-(on)	R21	2 black(std)	R gold plated	
R8016P	R8016L / R8014L	SP on-off-on	R17	3 red	G gold over silver	
R8016PA	R8016LA / R8014LA	SP (on)-off-(on)	R19	4 orange	K tin plated	
R8016PB	R8016LB / R8014LB	SP on-off-(on)	P13	5 yellow		
R8017P	R8017L / R8011L	DP on-none-on	P23	6 green		
R8017PA	R8017LA / R8011LA	DP on-none-(on)		7 blue		
R8018P	R8018L / R8012L	DP on-off-on		9 gray		
R8018PA	R8018LA / R8012LA	DP (on)-off-(on)				
R8018PB	R8018LB / R8012LB	DP on-off-(on)				
<b>3 way position switches</b>						
R8301L		3P on-none-on				
R8303L		3P on-none-(on)				
R8305L		3P on-off-on				
R8307L		3P (on)-off-(on)				
R8309L		3P on-off-(on)				
R8401L		4P on-none-on				
R8403L		4P on-none-(on)				
R8405L		4P on-off-on				
R8407L		4P (on)-off-(on)				
R8409L		4P on-off-(on)				
<b>3 way position switches</b>						
R818P/R818L/ R812L		SP3T on-on-on				
R818PA/R818LA/R812LA		SP3T (on)-on-(on)				
R818PB/R818LB/R812LB		SP3T on-on-(on)				
R845L		DP3T on-on-on				
R847L		DP3T (on)-on-(on)				
R849L		DP3T on-on-(on)				
					<b>Epoxy seal</b>	
					(none) none seal	
					E epoxy seal	
					<b>Support Bracket type</b>	
					(none) std.	
					S snap-in type	



## SPDT



Model No.	Switching position		
R8015	ON	none	ON
R8015A	ON	none	(ON)
R8016	ON	OFF	ON
R8016A	(ON)	OFF	(ON)
R8016B	ON	OFF	(ON)
Term. Comm.	2-3	open	2-1

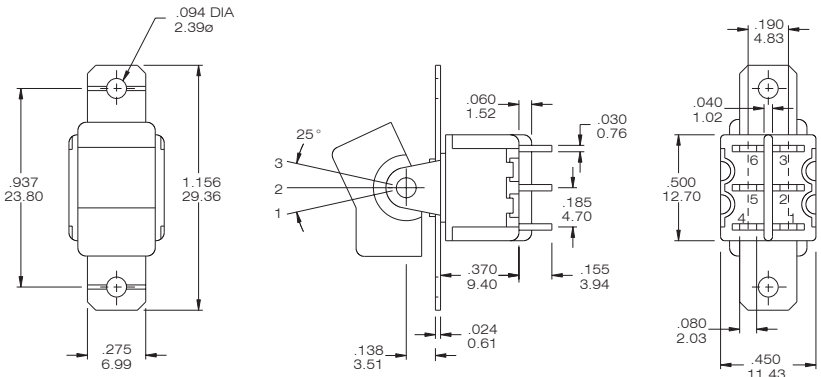


R8015 - R11-2-BQ

## DPDT



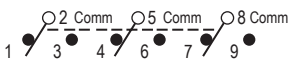
Model No.	Switching position		
R8017	ON	none	ON
R8017A	ON	none	(ON)
R8018	ON	OFF	ON
R8018A	(ON)	OFF	(ON)
R8018B	ON	OFF	(ON)
Term. Comm.	2-3,5-6	open	2-1,5-4
3 way switches (SP3T)			
R818	ON	ON	ON
R818A	(ON)	ON	(ON)
R818B	ON	ON	(ON)
Term. Comm.	2-3,5-6	2-3,5-4	2-1,5-4



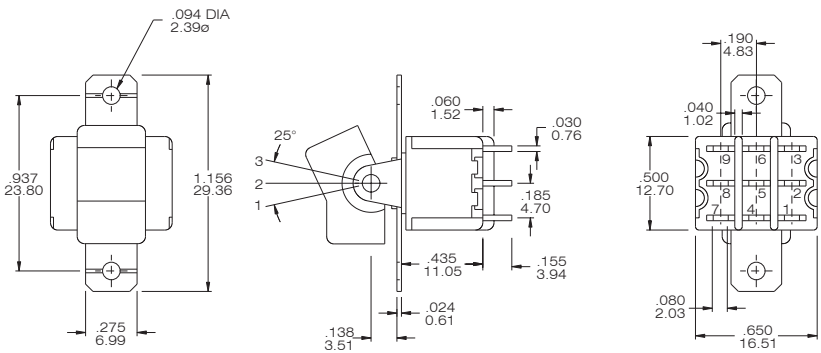
R8017 - R11-2-BQ

Please see page B14 to know more about R818 ( 3-way Switches)

## 3PDT



Model No.	Switching position		
R8301V	ON	none	ON
R8303V	ON	none	(ON)
R8305V	ON	OFF	ON
R8307V	(ON)	OFF	(ON)
R8309V	ON	OFF	(ON)
Term. Comm.	2-3,5-6 8-9	open	2-1,5-4 8-7

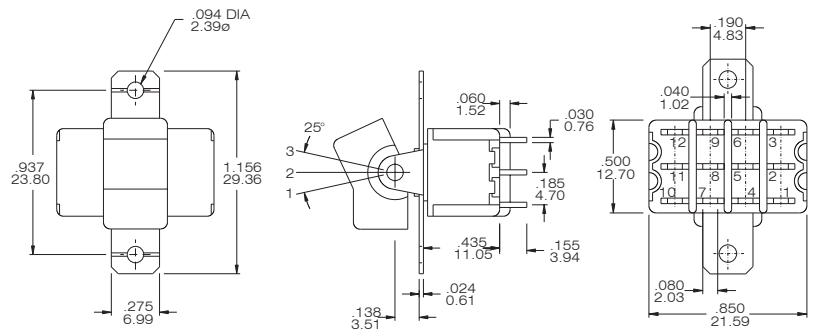


R8301V- R11-2-BQ

## 4PDT



Model No.	Switching position		
R8401V	ON	none	ON
R8403V	ON	none	(ON)
R8405V	ON	OFF	ON
R8407V	(ON)	OFF	(ON)
R8409V	ON	OFF	(ON)
Term. Comm.	2-3,5-6 8-9,11-12	open	2-1,5-4 8-7,11-10
3 way switches (DP3T)			
R845V	ON	ON	ON
R847V	(ON)	ON	(ON)
R849V	ON	ON	(ON)
Term. Comm.	2-3,5-6 8-9,11-12	2-3,5-4	2-1,5-4 8-7,11-10



R8401V -R11-2-BQ

Please see page B14 to know more about R845V ( 3-way Switches)

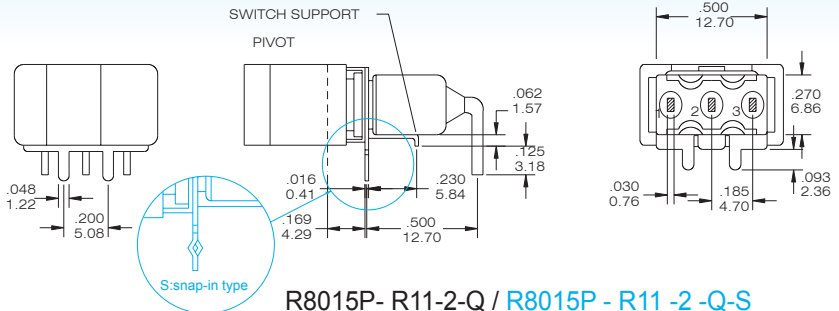


## HORISON RIGHT ANGLE

### SPDT



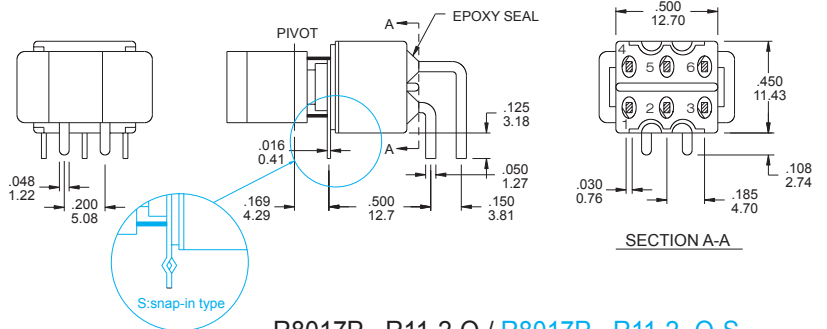
Model No.	Switching position		
R8015P	ON	none	ON
R8015PA	ON	none	(ON)
R8016P	ON	OFF	ON
R8016PA	(ON)	OFF	(ON)
R8016PB	ON	OFF	(ON)
Term. Comm.	2-3	open	2-1



### DPDT

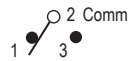


Model No.	Switching position		
R8017P	ON	none	ON
R8017PA	ON	none	(ON)
R8018P	ON	OFF	ON
R8018PA	(ON)	OFF	(ON)
R8018PB	ON	OFF	(ON)
Term. Comm.	2-3,5-6	open	2-1,5-4
3 way switches (SP3T)			
R818P	ON	ON	ON
R818PA	(ON)	ON	(ON)
R818PB	ON	ON	(ON)
Term. Comm.	2-3,5-6	2-3,5-4	2-1,5-4

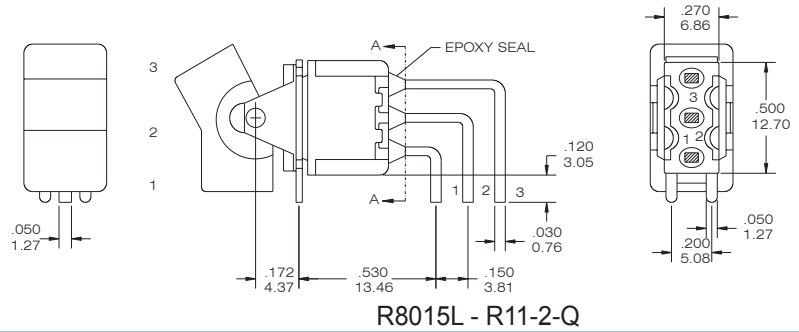


## VERTICAL RIGHT ANGLE

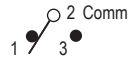
### SPDT



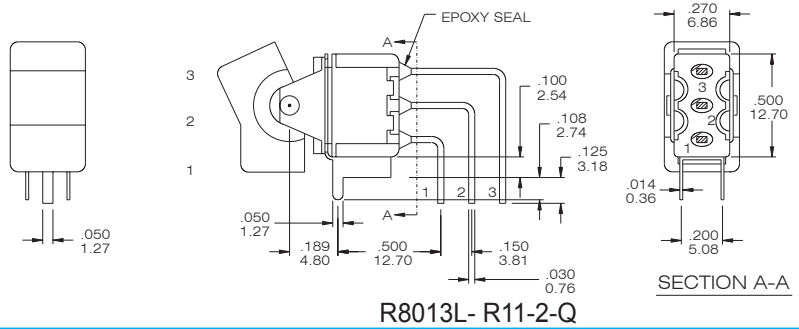
Model No.	Switching position		
R8015L	ON	none	ON
R8015LA	ON	none	(ON)
R8016L	ON	OFF	ON
R8016LA	(ON)	OFF	(ON)
R8016LB	ON	OFF	(ON)
Term. Comm.	2-3	open	2-1



### SPDT



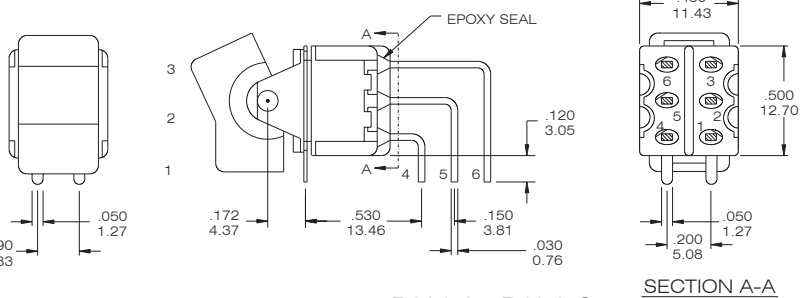
Model No.	Switching position		
R8013L	ON	none	ON
R8013LA	ON	none	(ON)
R8014L	ON	OFF	ON
R8014LA	(ON)	OFF	(ON)
R8014LB	ON	OFF	(ON)
Term. Comm.	2-3	open	2-1



### DPDT



Model No.	Switching position		
R8017L	ON	none	ON
R8017LA	ON	none	(ON)
R8018L	ON	OFF	ON
R8018LA	(ON)	OFF	(ON)
R8018LB	ON	OFF	(ON)
Term. Comm.	2-3,5-6	open	2-1,5-4
3 way switches (SP3T)			
R818L	ON	ON	ON
R818LA	(ON)	ON	(ON)
R818LB	ON	ON	(ON)
Term. Comm.	2-3,5-6	2-3,5-4	2-1,5-4



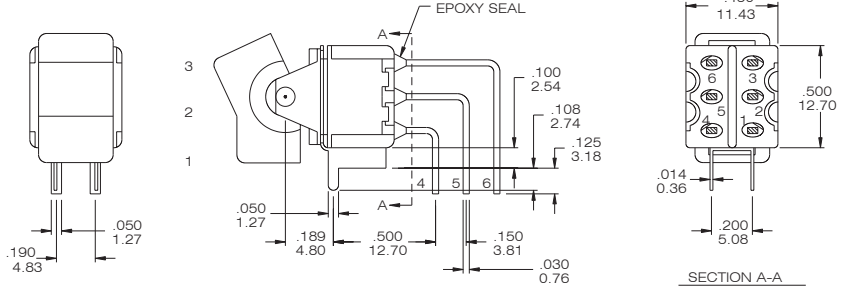


## VERTICAL RIGHT ANGLE PAGE

### DPDT



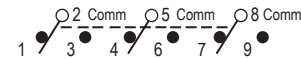
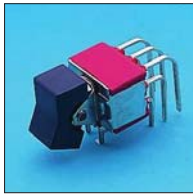
Model No.	Switching position		
R8011L	ON	none	ON
R8011LA	ON	none	(ON)
R8012L	ON	OFF	ON
R8012LA	(ON)	OFF	(ON)
R8012LB	ON	OFF	(ON)
Term. Comm.	2-3,5-6	open	2-1,5-4
3 way switches (SP3T)			
R812L	ON	ON	ON
R812LA	(ON)	ON	(ON)
R812LB	ON	ON	(ON)
Term. Comm.	2-3,5-6	2-3,5-4	2-1,5-4



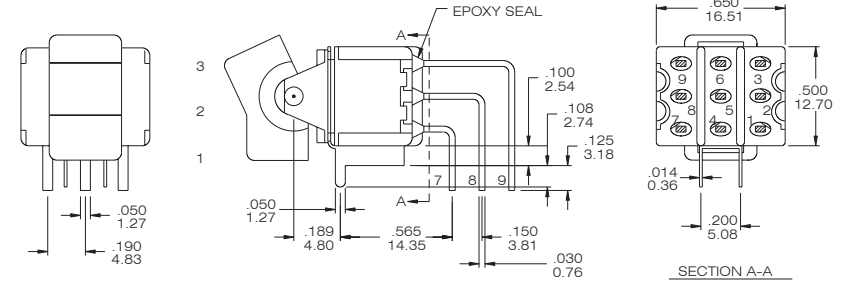
R8011L - R11-2-Q

Please see page B14 to know more about R812L (3-way Switches)

### 3PDT

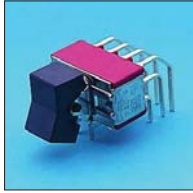


Model No.	Switching position		
R8301L	ON	none	ON
R8303L	ON	none	(ON)
R8305L	ON	OFF	ON
R8307L	(ON)	OFF	(ON)
R8309L	ON	OFF	(ON)
Term. Comm.	2-3,5-6 8-9	open	2-1,5-4 8-7

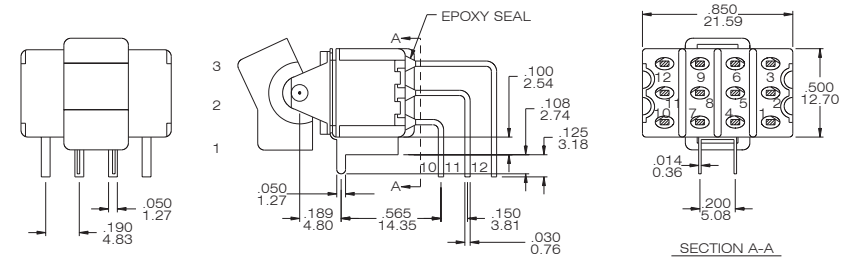


R8301L - R11-2-Q

### 4PDT



Model No.	Switching position		
R8401L	ON	none	ON
R8403L	ON	none	(ON)
R8405L	ON	OFF	ON
R8407L	(ON)	OFF	(ON)
R8409L	ON	OFF	(ON)
Term. Comm.	2-3,5-6 8-9,11-12	open	2-1,5-4 8-7,11-10
3 way switches (DP3T)			
R845L	ON	ON	ON
R847L	(ON)	ON	(ON)
R849L	ON	ON	(ON)
Term. Comm.	2-3,5-6 8-9,11-12	2-3,5-4 8-9,11-10	2-1,5-4 8-7,11-10



R8401L - R11-2-Q

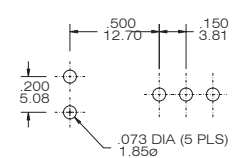
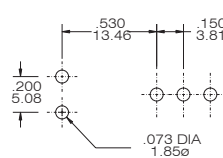
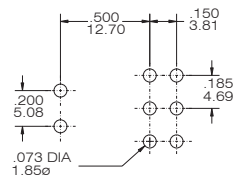
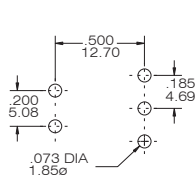
Please see page B14 to know more about R845L (3-way Switches)

FOR R8015P-R8016P

FOR R8017P-R8018P

FOR R8015L-R8016L

FOR R8013L-R8014L

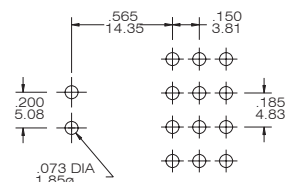
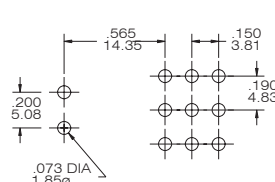
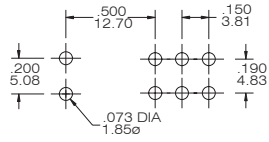
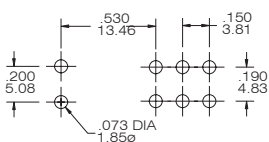


FOR R8017L-R8018L

FOR R8011L-R8012L

FOR R8301L-R8309L

FOR R8401L-R8409L





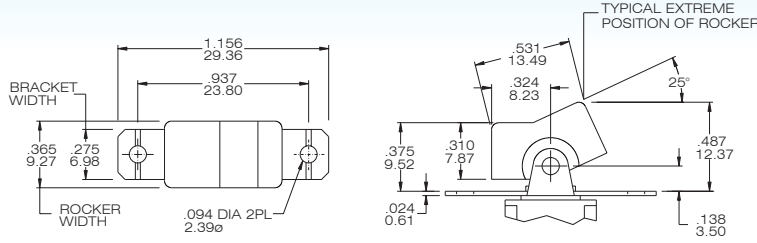
# T80-R

# Miniature Rocker and Paddle Switches

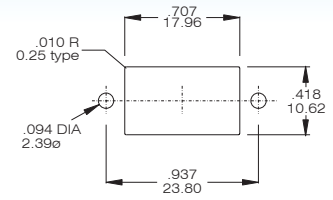


## Actuator Option(PANEL REAR MOUNT) only for the straight type (Page B-08)

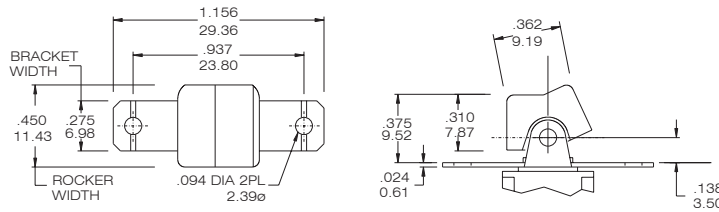
R11



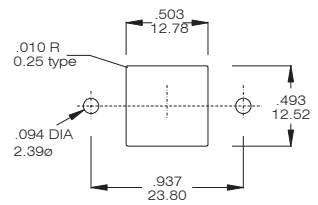
PANELMOUNTING



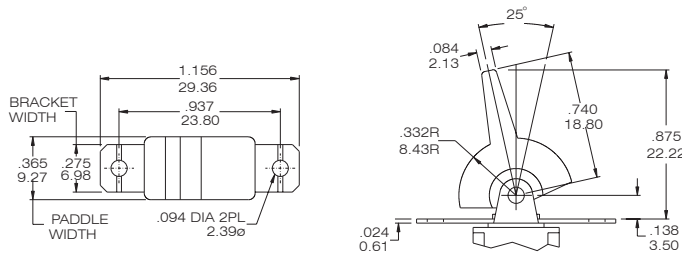
R21



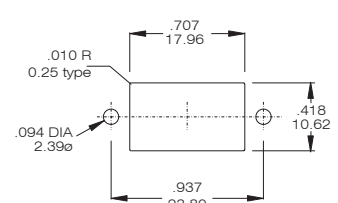
PANELMOUNTING



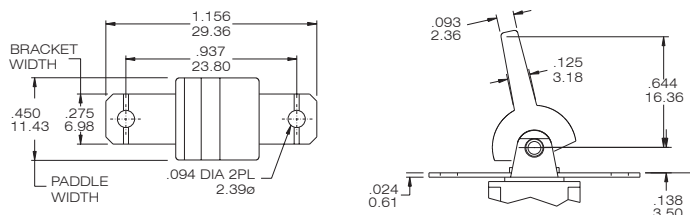
P13



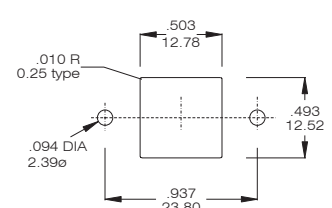
PANELMOUNTING



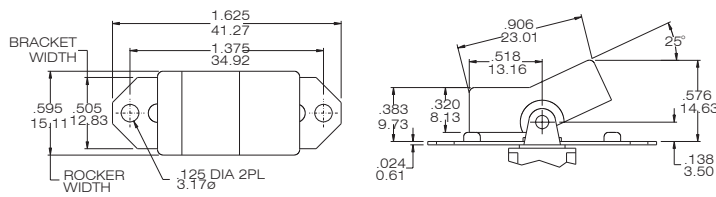
P23



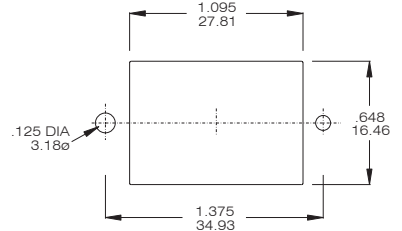
PANELMOUNTING



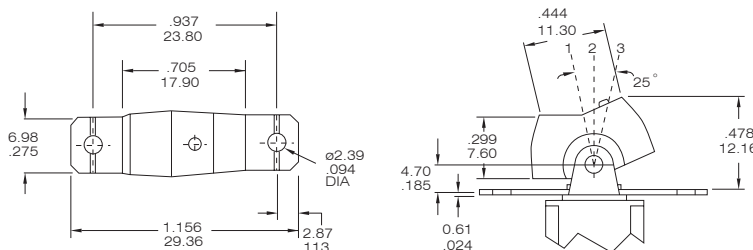
R15



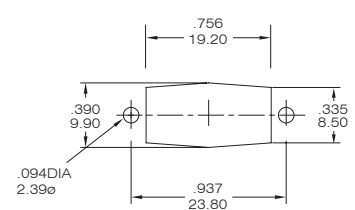
PANELMOUNTING



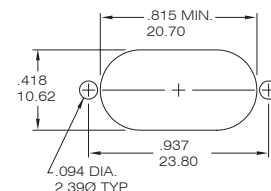
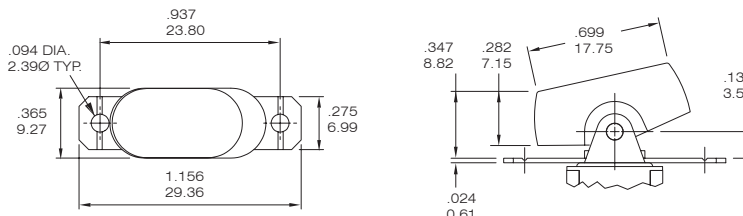
R17



PANELMOUNTING



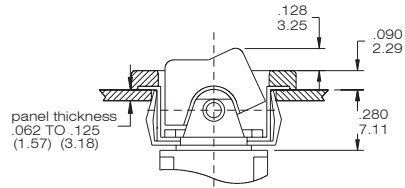
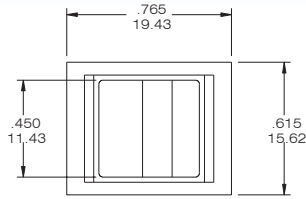
R19



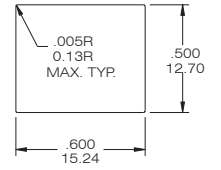


## Actuator Option(SNAP-IN FRONT MOUNT) only for the straight type (Page B-08)

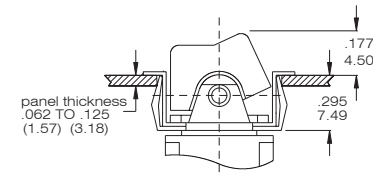
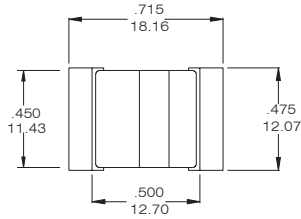
### R12



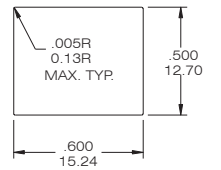
### PANEL MOUNTING



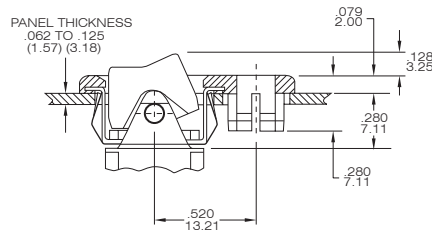
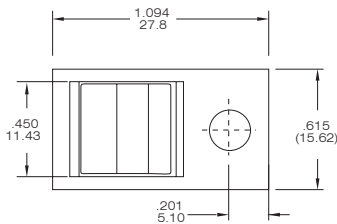
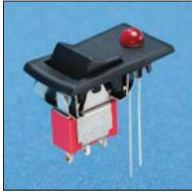
### R22



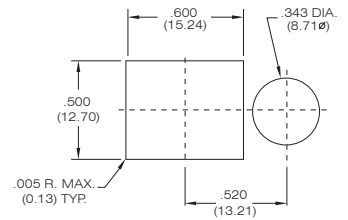
### PANEL MOUNTING



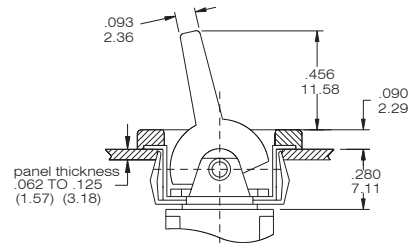
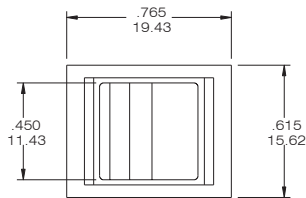
### R32



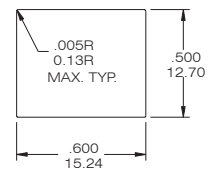
### PANEL MOUNTING



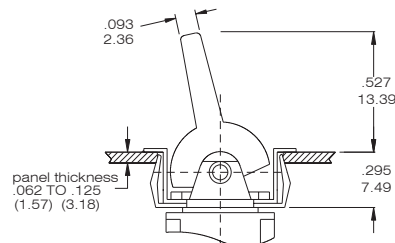
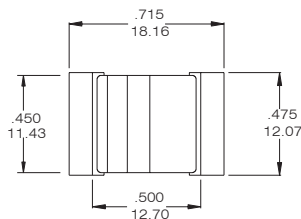
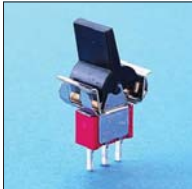
### P14



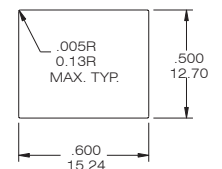
### PANEL MOUNTING



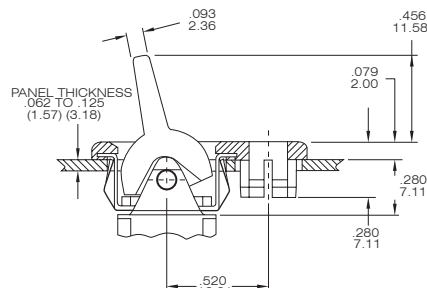
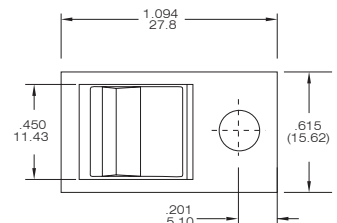
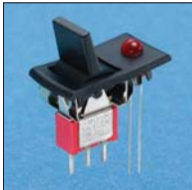
### P24



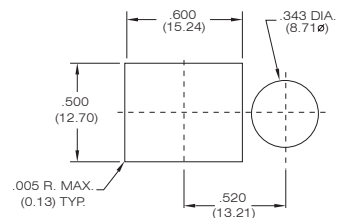
### PANEL MOUNTING



### P34

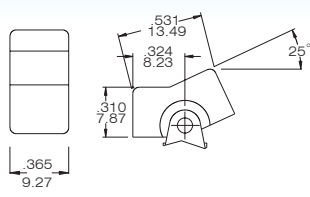
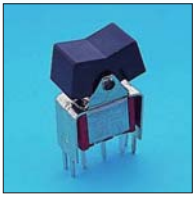


### PANEL MOUNTING

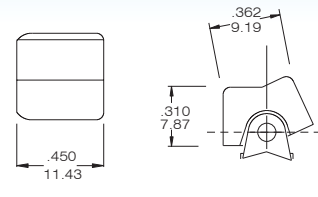


## Actuator Option (P.C.B MOUNT)

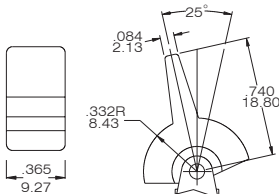
R11



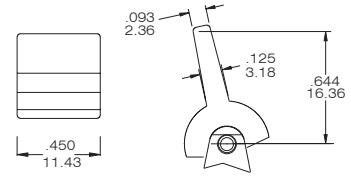
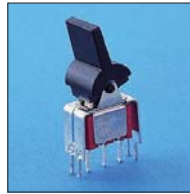
R21



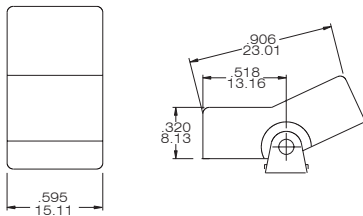
P13



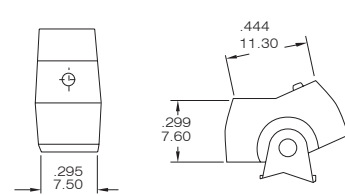
P23



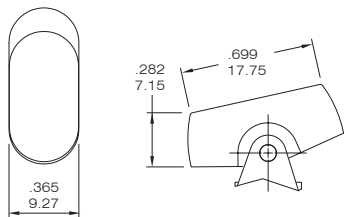
R15



R17



R19



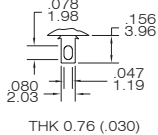
### Actuator Color Option

ACTUATOR AND FRAME COLORS					
1	White	4	Orange	7	Blue
2	Black(Std.)	5	Yellow	9	Gray
3	Red	6	Green		

### TERMINAL OPTION (ONLY FOR THE STRAIGHT TYPE R8015~R8401)

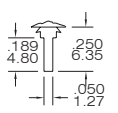
### TERMINAL SEAL OPTION

B SOLDER LUG



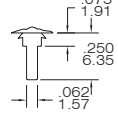
THK 0.76 (.030)

C PRINTED CIRCUIT



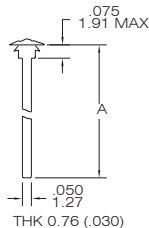
THK 0.76 (.030)

D QUICK CONNECT



THK 0.76 (.030)

WIREWRAP



THK 0.76 (.030)

CODE	"A" dimension
D1	.750 (19.05)
D3	.425 (10.8)

E TERMINAL SEAL



### CONTACT MATERIAL OPTIONS

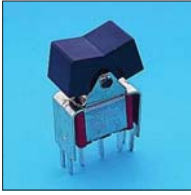
CODE	CONTACT MATERIAL	TERMINAL MATERIAL	RATING
Q	Silver plated	Silver plated	5 A @ 125 V AC or 28 V DC; 3 A @ 250 VAC
R	Gold plated over nickel plated	Gold plated over nickel plated	0.4VA MAX @ 20 V AC or DC MAX
G	Gold plated over silver plated	Gold plated over silver plated	0.4 VA MAX @ 20 V AC or DC MAX or 5 A @ 125V AC or 28 V DC; 3 A @ 250 VAC
K	Gold plated over nickel plated	Tin over nickel plated	0.4VA MAX @ 20 V AC or DC MAX

\* THE K option is only for some special item. Please inquire first when you need the "K" option

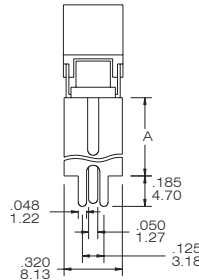
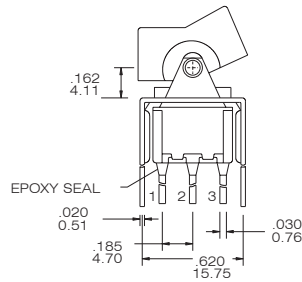
## VERTICAL SUPPORT BRACKET OPTION

( only apply the straight type terminal -page B08. Please build the terminal option is "c" code)

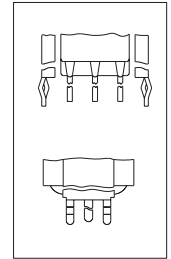
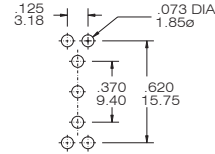
S20 / S25/ V20/V25



SPDT



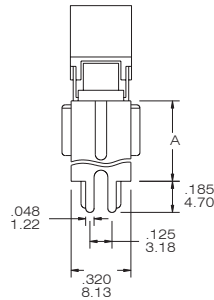
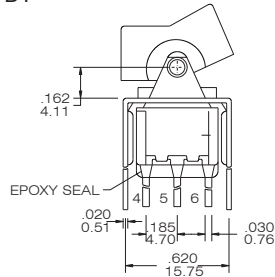
P.C. MOUNTING



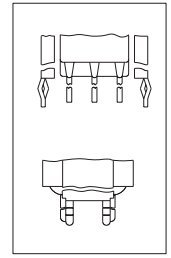
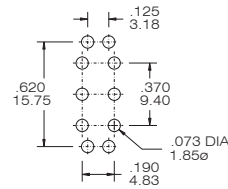
SNAP-IN  
V20/ V25

R8015-R11-2-CQ-S20(S25)

DPDT



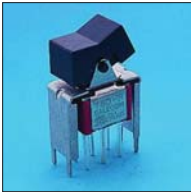
P.C. MOUNTING



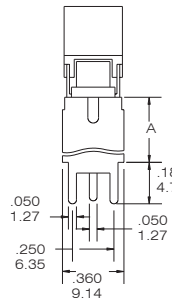
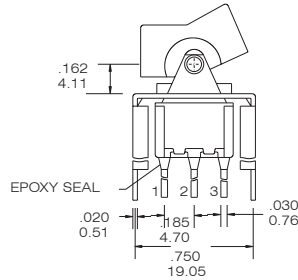
SNAP-IN  
V20/ V25

R8017 - R11-2-CQ-S20(S25)

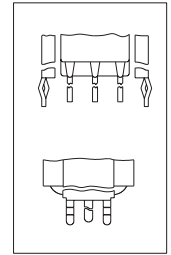
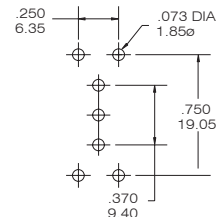
S35/S40 /V35/V40



SPDT



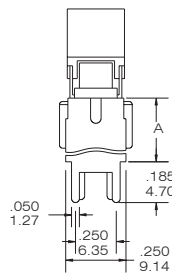
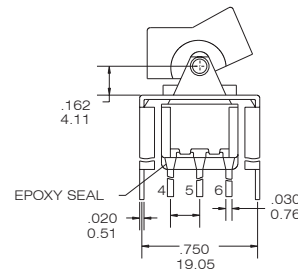
P.C. MOUNTING



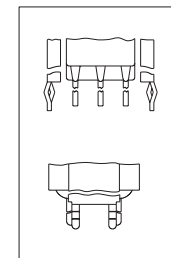
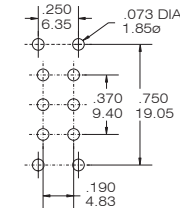
SNAP-IN  
V35/ V40

R8015-R11-2-CQ-S35(S40)

DPDT



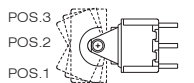
P.C. MOUNTING



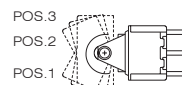
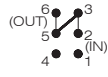
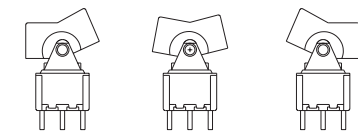
SNAP-IN  
V35/ V40

R8017-R11-2-CQ-S35(S40)

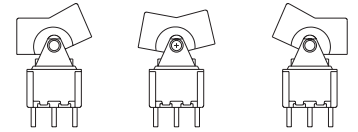
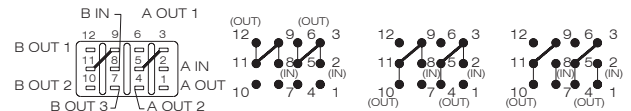
## The information of 3-way rocker switches



SINGLE POLE, 3 POSITION



DOUBLE POLE, 3 POSITION



SP3T

DP3T