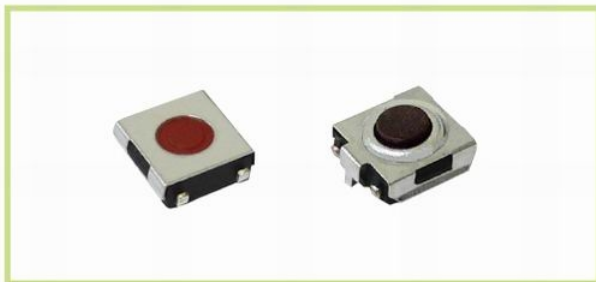


TSL Series

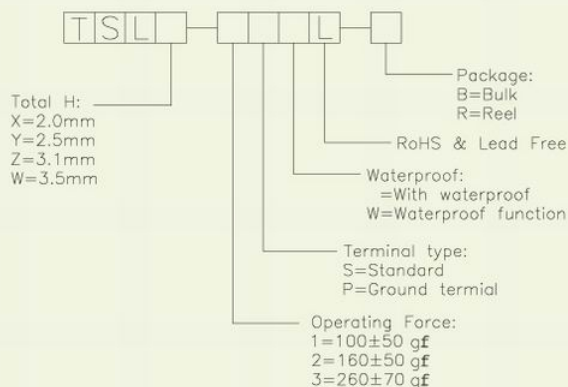
6.2×6.2 Flat & U-Type Terminals Type Tact Switch



Tact Switch



How to order



Features

- Reflow solderable.
- Available with anti-ESD ground terminal.
- Packaged with a 16mm wide embossed taping.

Applications

- Operating switches in all types of electronic equipment such as audio devices, office devices, communication devices, measuring instruments, TVs, video recorders, automotive sets, etc.

Specification

Items		Standard
Operating temperature range		-20°C to +70°C
Electrical performance	Rating	50mA, 12V DC
	Insulation resistance	100MΩ min. 100V DC
	Dielectric strength	250V AC for 1 min.
	Contact resistance	100mΩ max.
Durability	Lifetime	50,000 Cycles, 100,000 Cycles
Mechanical performance	Operating force	2:160 ± 50gf, 3:260 ± 70gf
	Travel	0.25 ± 0.1mm

Diagram

	TSL-S	TSL-P	TSL-SW	TSL-PW
Dimensions				
Circuit Diagram				
Pad Layout				

* Please follow drawing of Approved Sheet that catalog drawing only for reference.