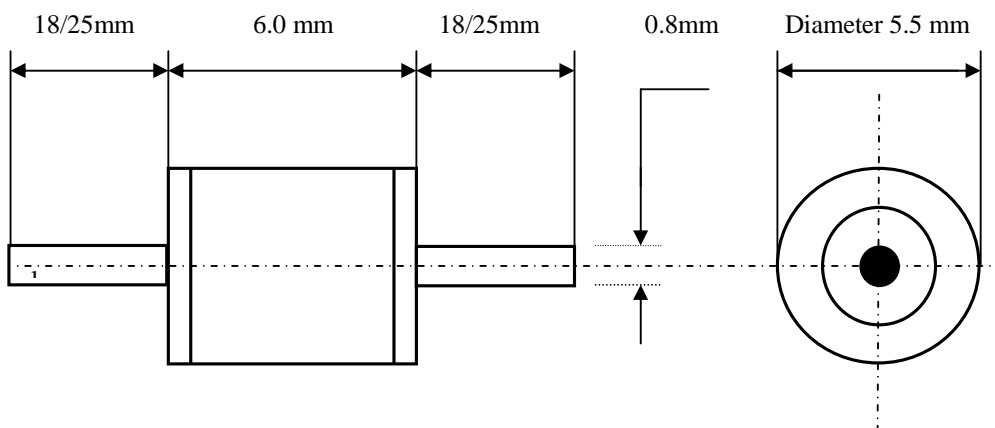


Surge Arrester Spec. Sheet

(R230TC etc.)

ELECTRICAL CHARACTERISTICS									
ITEM	DC SPARKOVER VOLTAGE (100v/s)V	IMPULSE SPARKOVER VOLTAGE (IKV/ μ s) V	IMPULSE DISCHARGE		AC DISCHARGE CURRENT 50HZ 5times A	DC HOLDOVER VOLTAGE V	ISO. RES. Ω	CAPACITANCE PF	DIMENSION MM
			CURRENT						
			10/100 μ s 300times A	8/20 μ s 10times KA					
R70TC	70 \pm 15%	\leq 700	50	10	5	50	$\geq 10^9$	≤ 3	5.5 X 6
R90TC	90 \pm 15%	\leq 700	50	10	5	50	$\geq 10^9$	≤ 3	5.5 X 6
R150TC	150 \pm 15%	\leq 800	50	10	5	80	$\geq 10^9$	≤ 3	5.5 X 6
R230TC	230 \pm 15%	\leq 800	100	10	5	135	$\geq 10^9$	≤ 3	5.5 X 6
R350TC	350 \pm 15%	\leq 900	100	10	5	135	$\geq 10^9$	≤ 3	5.5 X 6
R450TC	450 \pm 15%	\leq 1000	100	10	10	135	$\geq 10^9$	≤ 3	5.5 X 6
R600TB	600 \pm 15%	\leq 1200	100	10	10	135	$\geq 10^9$	≤ 3	8.0 X 6
R800TB	800 \pm 15%	\leq 1400	100	10	10	135	$\geq 10^9$	≤ 3	8.0 X 6

MECHANICAL DIMENSIONS :



Note : Leads length : 18 or 25mm optional .
 Silver or Nickel coated surface optional .
 Packaging : bulk or Plastic blister optional .