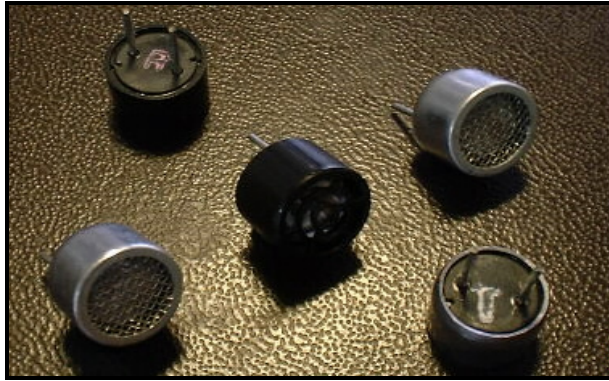


Ceramic Transducer Design Co.,Ltd

TEL: +886-3-3614555 FAX +886-3-3674408 E-mail: ctdco@ms51.hinet.net

Photo:



Standard type of this sensor:

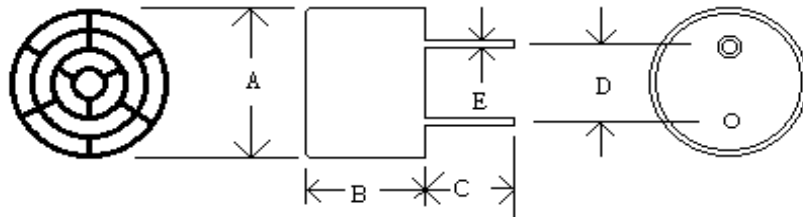
40T/R-10W	White mesh with aluminum case
40T/R-10B	Black mesh with aluminum case
40T/R-10P	Plastic black case

Specification:

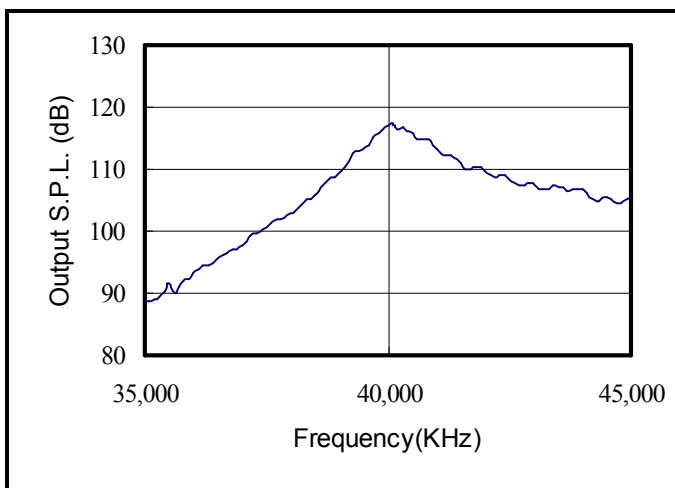
PARTS NUNBER	40T-10	40R-10
Center frequency (kHz)	40.0±1.0kHz	40.0±1.0kHz
Sound pressure level (0dB=0.0002 μ bar)	≥ 112dB	-----
Sensitivity (0dB vs 1V/ μ bar)	-----	≥ -69dB
Bandwidth (kHz)	4.0/105dB	2.0/-73dB
Capacitance (pF)	-----	
Beam angle -6dB	80°	
Driving voltage (RMS)	20V	
Working temperature (°C)	-30~80	

Dimension(40T/R-10P):

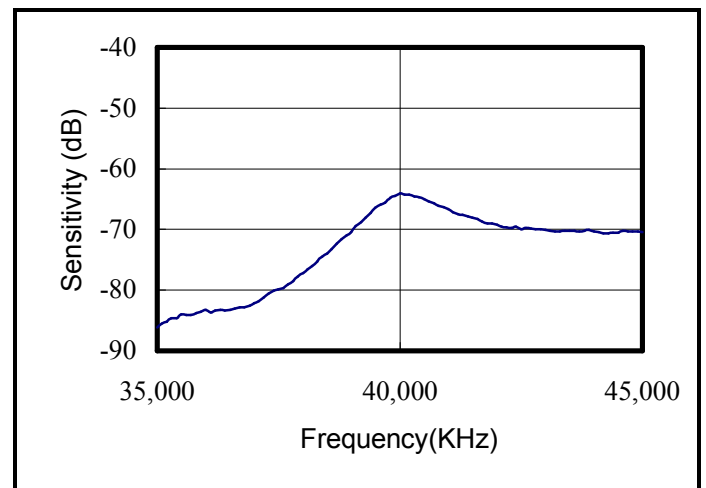
- A=9.8±0.2
- B=6.8±0.4
- C=6.9±0.8
- D=5.0±0.2
- E=0.7±0.1
- (UNIT: mm)



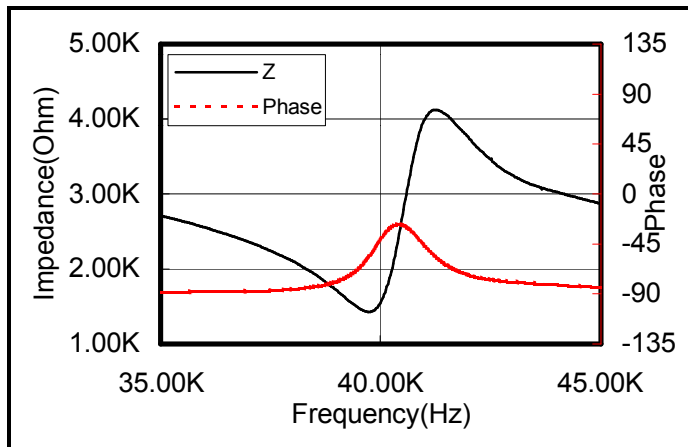
Sound pressure level



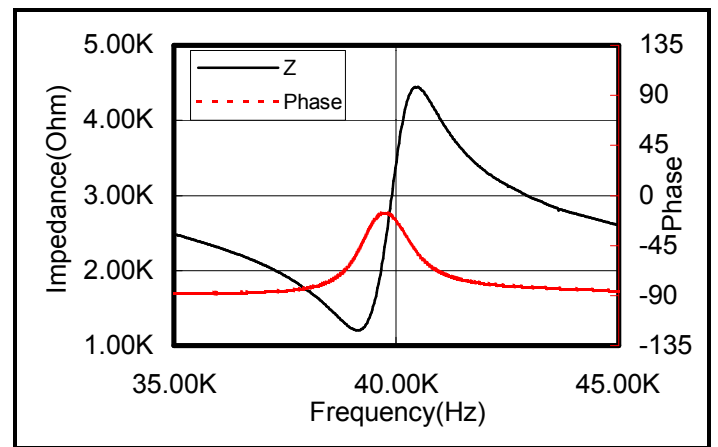
Sensitivity



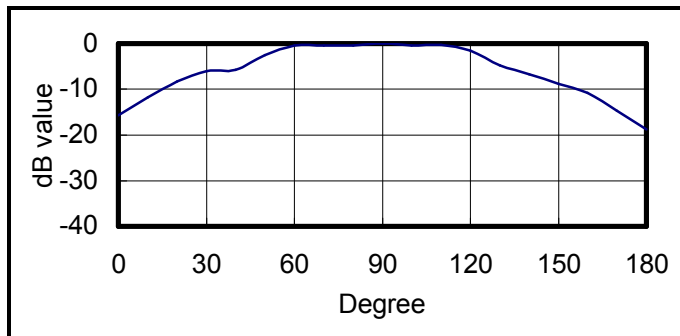
Transmitter impedance



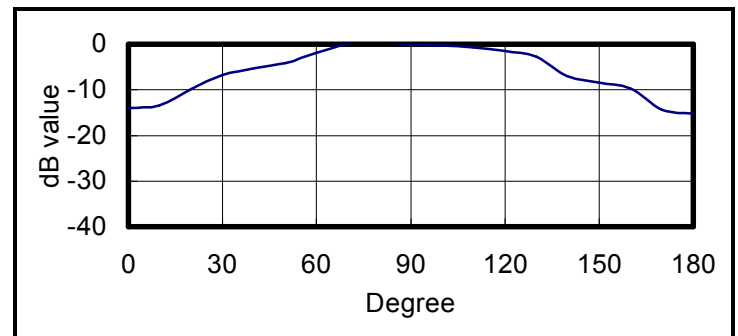
Receiver impedance



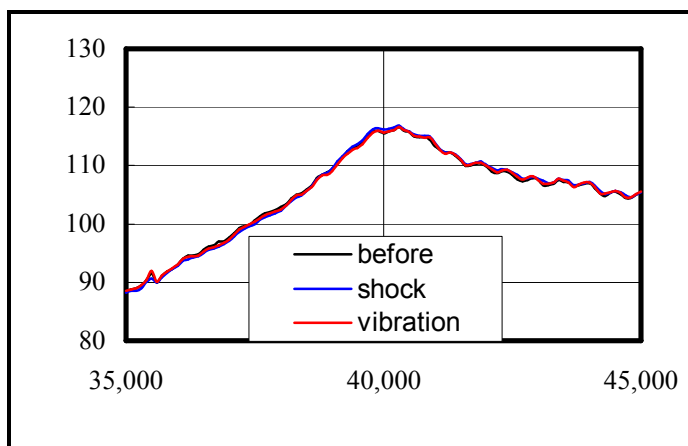
Beam angle of transmitter



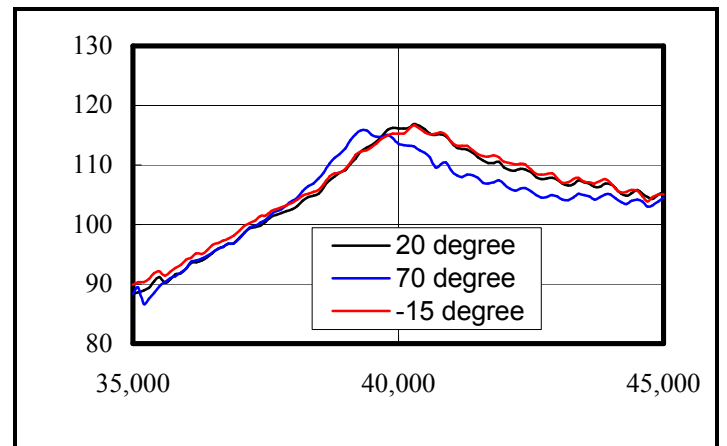
Beam angle of receiver



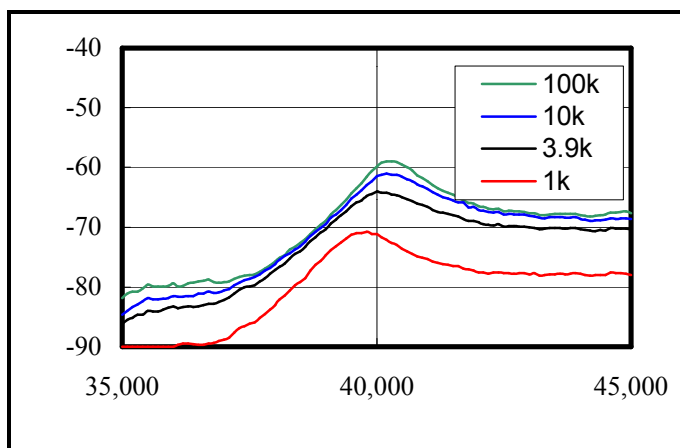
Environment test



Temperature test



Sensitivity change with load impedance



S.P.L. change with driving voltage

